



**"Master Your Terrain"**

**(307) – 775 – 9565**

[www.tntcustoms.com](http://www.tntcustoms.com)

## JK Wrangler Guardian Rear Bumper

Congratulations for purchasing TNT, Inc. Guardian Rear Bumper. Begin by unpacking your kit and comparing the contents to the packing list provided as attachment "A" to this manual. Please observe proper shop safety procedures when performing this install. Use proper eye and hearing protection as required and use safe jack stands/supports, place appropriately for supporting the vehicle while you work on it.

### Rear Bumper Installation

**STEP 1:** Begin by removing the factory rear bumper and receiver hitch (if equipped)

**STEP 2:** Using a torch or appropriate cutting tool remove the factory rear crossmember shown in Figure 1. Once crossmember is removed, use a grinder and clean the inside and ends of the frame rails. (Fig 2)

Figure 1

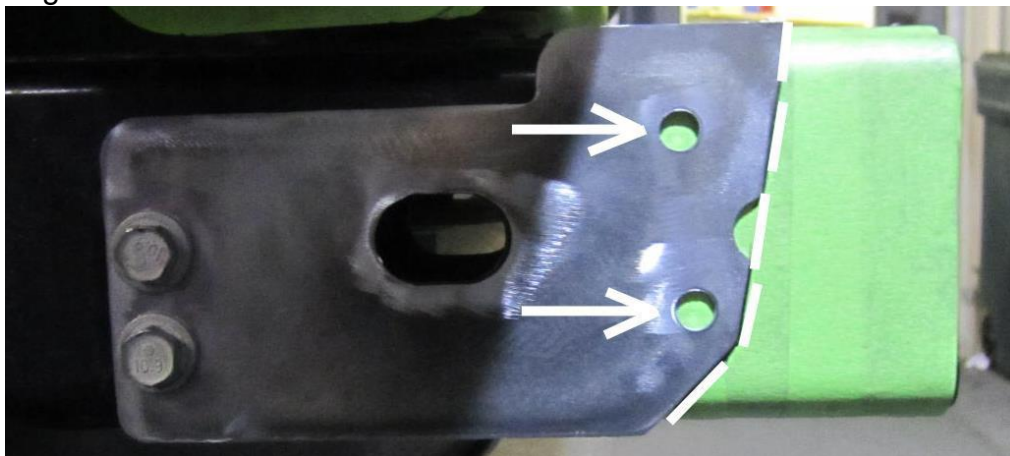


Figure 2



**STEP 3:** Locate the cut guide provided with your bumper. Attach cut guide to the frame using the two factory 10mm bolts as seen in Figure 3.

Figure 3

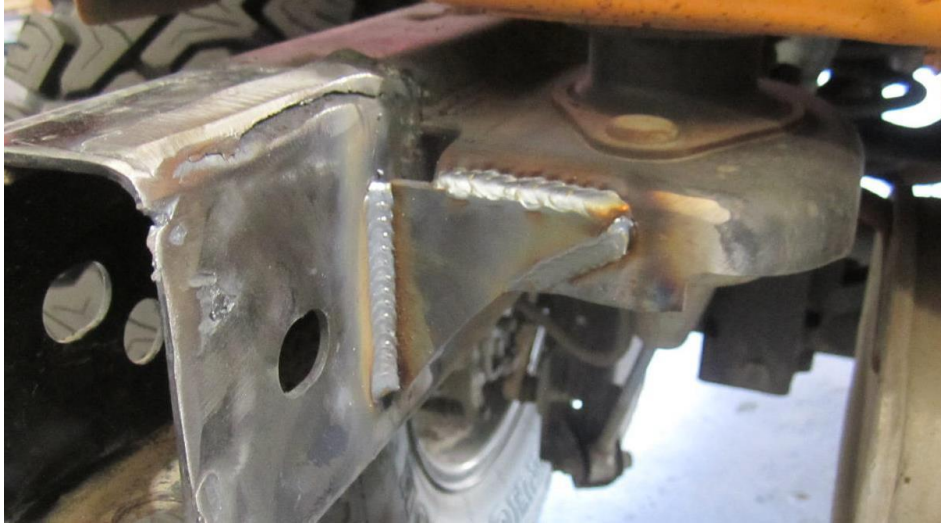


**STEP 4:** Using the appropriate marking device, mark the two holes that are to be drilled and make a line down the front edge of the guide as seen in figure 3. Cut off ends of frame rail using this line as your guide. Mark center of the two holes and drill to  $\frac{1}{2}$ " Clean the ends of the frame with a grinder.

**STEP 5:** Repeat Steps 3 & 4 for the opposite side of the frame.

**STEP 6:** Locate the two triangle shaped gussets in your hardware kit. These gussets are to provide additional support for the rear body mount bracket. Gussets should be welded in as seen in Figure 4. Once gussets are installed paint frame rails and body mount brackets.

Figure 4:

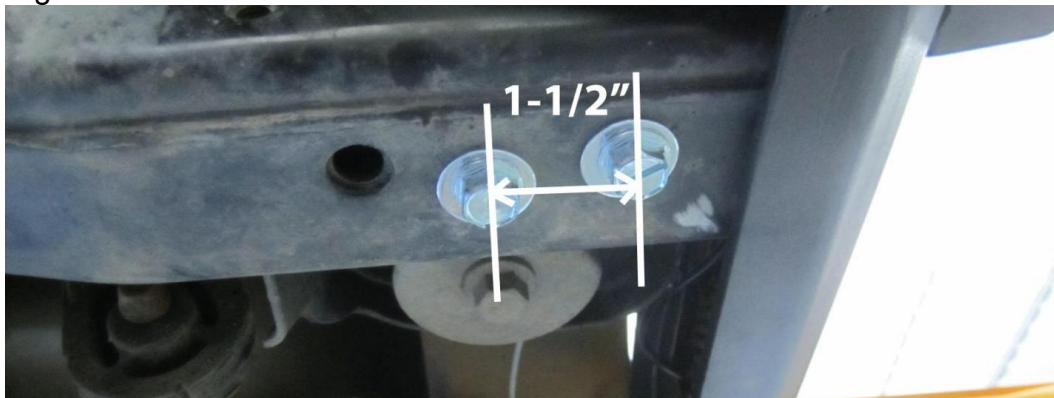


**STEP 7:** (if using optional light kit, mount lights to bumper before installing bumper) Install your new Guardian rear bumper by sliding the bumper mounts into the ends of the frame rails. Locate the 7/16" x 1" bolts and 7/16" washers provided in your hardware kit. Install all 6 bolts and washers but do not tighten at this time.

*Use caution when tightening the thread cutting bolts used in Step 8 & 9 so as to not strip the holes out.*

**STEP 8:** Locate the existing hole on the underside of the frame rail (*note: hole will be blocked from inside by bumper mounting bracket*). Using the hole as your guide; drill through the bumper mount using a 5/16" drill bit. The other side of the frame does not have an existing hole in it so a measurement will need to be taken from a fixed point shared on both sides of the frame rail in order to transfer the hole location to the other rail. Once that location is marked, drill through both the frame rail and the bumper mount using a 5/16" drill bit. Install a 3/8" thread cutting bolt from the hardware kit in each of these holes.

Figure 5



**STEP 9:** Using the centerline of the previously installed 3/8" bolts as your guide, measure rearward 1.5" and mark the center of the frame rail. Using a 5/16" drill bit; drill through both the frame and the bumper mount. Install the last two 3/8" thread cutting bolts from your hardware kit. (Figure 5)

**STEP 10:** Now that the 3/8" thread cutting bolts have been installed and tightened proceed in tightening the 7/16" bolts installed previously.

### **Optional Light Kit**

*To wire the rear lights in with your reverse lights follow the steps below*

**STEP 1:** Remove the passenger rear light assembly. Using a test light, locate the wire in the wiring harness that feeds the factory back up lights. You do not need to run a ground wire to the factory light harness, lights can be grounded to either the frame or the body.

**STEP 2:** (this step should be completed before mounting the bumper) Mount the lights provided in the light kit to the bumper using the #8 screws and threaded clips provided in the kit.

**STEP 3:** Splice lights into the factory backup lights using the appropriate connectors and wire.

#### Components:

- Guardian Rear Bumper
- Cut Guide
- Body mount gussets
- Rear Light kit (optional)

#### Hardware

- 4 - 3/8" X 1" thread cutting bolts
- 6 – 7/16" Bolts
- 6 – 7/16" washers

#### Light Kit

- 2 – LED lights
- 4 – threaded clips
- 4 - #8 x 1/2" screws